



TECHNICAL INFORMATION

REACH STACKER

FERRARI

279.5 - 279.6

COSTRUZIONE VEICOLI SPECIALI

CHASSIS

All welded box type. Torsion resistant structure. Low center of gravity.

ENGINE

VOLVO TWD 1031 VE.
Best performances and lowest fuel consumption.
Low polluting level.

TRANSMISSION

CLARK 36000 - Integrated torque converter and power shift - 4 Speeds forward and 4 speeds reverse.

FRONT AXLE

Extra wide front axle for maximum stability. Hub reduction. Wet disc brake. Oil cooling. Extra heavy duty type.

REAR AXLE

Articulating axle with double acting single cylinder. Rubber shock absorbers.

POWERED STEERING

Full hydrostatic steering system (Orbitrol) with priority valve.

BRAKING SYSTEM

Service brakes by wet discs acting on front wheels with cooling system. Parking and emergency braking system by release spring operated by manual lever in cab.

HYDRAULIC SYSTEM

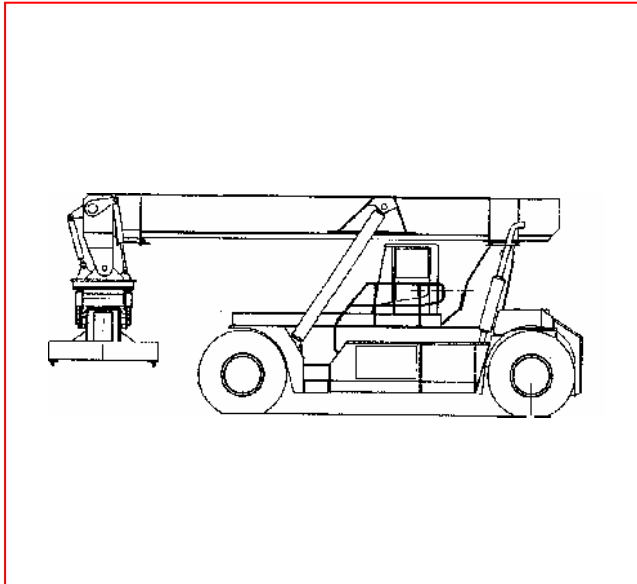
Variable displacement pumps. Load sensing proportional distributor controlling telescoping and lifting. Anti-saturation LUDV system. Multifunctional joystick. Oil cooling system.

ELECTRICAL SYSTEM

Modular system with diagnostic capability. Reliable and easy to service. 24 V. - Two 12 V. batteries of low maintenance type.

BOOM

High torsion - High quality steel.
One basic outer section and one inner telescopic section.



DRIVER'S CAB

Comfortable and ergonomic. Sound proof. Fitted on silent blocks to reduce vibrations. Best all round visibility. Safety glasses. Adjustable operator seat. Front and roof wipers. Made in aluminium.

LIQUID CAPACITIES

Fuel	lt.	450
Cooling system	lt.	75
Hydraulic oil	lt.	630
Drive axle(differential)lt.		78
Gear box	lt.	50
Engine oil	lt.	36

INSTRUMENTS

Engine water thermometer.
Engine oil pressure manometer.
Transmission oil thermometer.
Fuel gauge. Hourmeter/RPM meter.

WARNING LIGHTS/ CONTROLS

Air filter clogging. Brake oil filter clogging. Transmission oil filter clogging. Hydraulic oil filter clogging. Transmission oil high temperature. Brake oil low pressure and high temperature. Engine oil low pressure. Direction warning lights. Spot lights. Low battery indicator. Park brake applied. Amber beacon. Working light. Emergency lights. Fuel low level. Electronic cut off system in case of overloading. Digital indicator for load, boom length and angle, load distance and tare.

MISCELLANEOUS

Spreader:
Highest strength steel.
Compact and precise. Telescoping from 20' to 40'. All functions controlled from cab. Side mechanical tilting. Damping. Safety sensors on four corners. Heater - Rear view mirror - Front lights - Rear lights - Working lights - Amber beacon - Front and rear direction lights - Braking lights - Reverse buzzer - Anti-reverse safety system -

OPTIONS

Hydraulically sliding cab - Electronic speed control - Aircon in cab. - 12 V. plug for radio system - Extinguisher - Automatic engine shut down - Rear and upper glass defroster - Integral spreader with piggy back - Fuel heating system. - Vertical synchronized lifting. - Lifting speed booster.

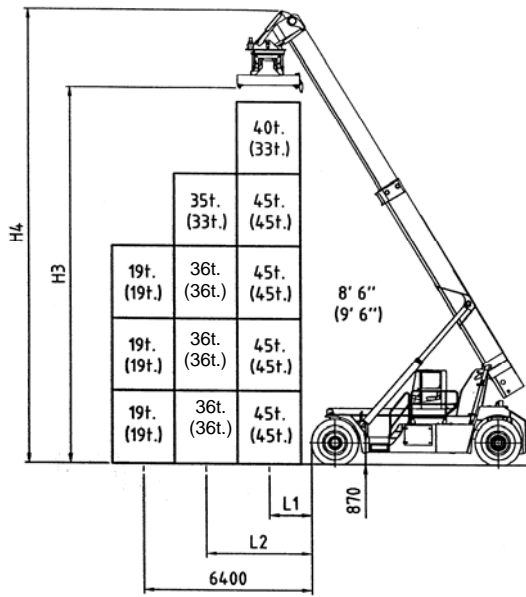
SPECIFICATION	01 Manufacturer				CVS	CVS
	02 Model				FERRARI 279.5	FERRARI 279.6
	03 Lifting capacity	First Row/Second Row		Kg.	45000/36000	45000/36000
	03 Lifting capacity	under spreader + Piggy Back		Kg.	45000	45000
	04 Load Center	First Row/Second Row	L1/L2	mm.	1790/3850	1790/3850
	05 Power unit				Diesel engine	Diesel engine
	06 Steering				Steering wheel in the cab	
	07 Tyre type	Front / Rear			Pneumatic	Pneumatic
08 Wheels	Number at Front/Rear (*=driven)			4*/2	4*/2	
DIMENSIONS	09 Lifting Height	Under Spreader - First Row	H3	mm.	15035	16095
	Width of Spreader	20 Ft.	V	mm.	6052	6052
		40 Ft.	V	mm.	12148	12148
	Side Tilting	Mechanical		Deg.	±4	±4
	Rotation	Hydraulic	β	Deg.	-95+185	-95+185
	Side shifter	Max	V1	mm.	±800	±800
	14 Boom Angle	Min / Max		Deg.	0/59	0/60
	15 Overall dimensions	Length without boom		mm.	8560	8560
		Length with spreader	L	mm	11645	12015
	16	Width	B	mm.	4184	4184
	17	Boom height, Min.	H1	mm.	4830	4830
	18	Boom height, Max	H4	mm.	18140	18190
	19	Height - Top of Cab	H5	mm.	3750	3750
	20	Seat height	H	mm.	2760	2760
20/A	Min. dist. spreader from ground	H2	mm.	1405	1405	
21 Turning radius	Inner/Outer	R2/R1	mm.	980/8390	980/8390	
22 Aisle for 90° stacking	Incl. 200 mm. safety margin 20' 40'	A1/A2	mm.	9810/12710	9810/12710	
PERFORMANCE	Stability (static)	DIN 15018-1			pren 1459	pren 1459
	23 Speeds	Travelling F. & R. Laden/Unladen		km/h	25/26	25/26
	24	Lifting : max / zero load (with booster**)		m/s	0.23/0.26(0.38)	0.23/0.26(0.38)
	25	Lowering Laden/Unladen		m/s	0.29	0.29
	26 Drawbar pull	Max - Laden		kN	266	266
	27 Gradeability	Cont. at 2 Km/h - Laden		%	23	23
	28	Max at 0 km /h - Laden		%	25	25
WEIGHTS	29 Gross vehicle weight			Kg.	77700	79200
	30 Axle load - Front	Unladen		Kg.	37450	39200
		Laden		Kg.	100600	101800
	31 Axle load - Rear	Unladen		Kg.	40250	40000
		Laden		Kg.	22100	22400
TYRES BRAKES CHASSIS	32 Tyres	Number - Front/rear			4/2	4/2
	33	Size - Front		ins.	18.00-33(36pr)	18.00-33(36pr)
	34	Size - Rear		ins.	18.00-33(36pr)	18.00-33(36pr)
	35 Wheelbase		L3	mm.	6500	6500
	36 Track Front	Between centres - driven wheels	B1	mm.	3033	3033
	37 Track Rear	Between centres - steering wheels	B2	mm.	2820	2820
	38 Ground clearance	Mid-way along the wheelbase		mm.	370	370
	39 Foot brake system	Type/brake wheels			Wet disc brake/Driven Wheel	
	40 Parking brake	Type/brake wheels			Spring brakes/Driven wheel	
	STEERING SYSTEM	Type			Hydrostatic	Hydrostatic
DRIVING SYSTEM	41 Engine	Manufacturer - Type			VOLVO TWD 1031 VE ***	
	42	Rating - DIN 6271		kW/(hp)	235(320)	235(320)
	43	Rated Speed		RPM	2100	2100
		Peak Torque - at engine speed		Nm/min	1550/1100	1550/1100
	44	Number Cylinders - swept volume		cm3	6/9600	6/9600
		Compression Ratio			18:1	18:1
	45	Fuel Consumption (Average)		l/h	12-16	12-16
	Alternator	Type - Rating		A	2 x 60 AC	2 x 60 AC
	Starting Batteries	Voltage - Capacity		V/Ah	2 x 12 V -180 A	2 x 12 V -180 A
	46 Drive Axle	Type			With double reduction	
	47 Gear Box	Type-number of gears forwar/rev.			Clark - 4/4	Clark - 4/4
48 Clutch	Clutch type			Torque converter	Torque converter	
49 Hydraulic pressure	For attachments		Bar	140	140	
50 Sound Level	Overhead guard/Cab average		dB(A)	78/74	78/74	

** Lifting booster optional

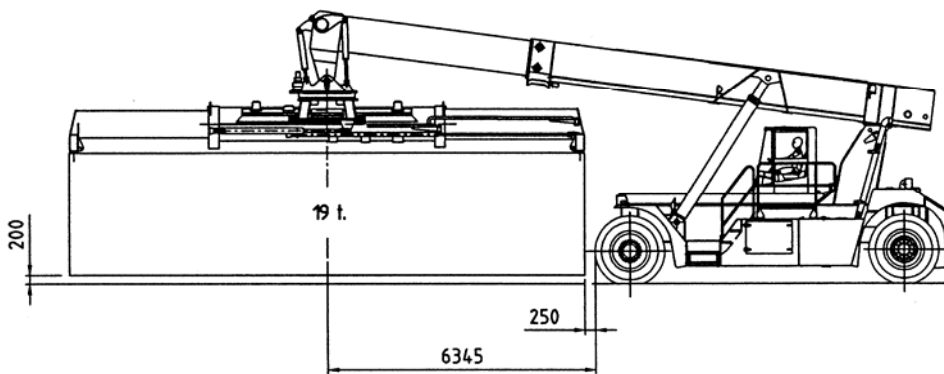
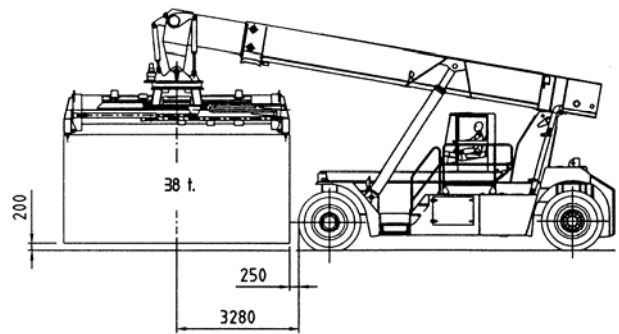
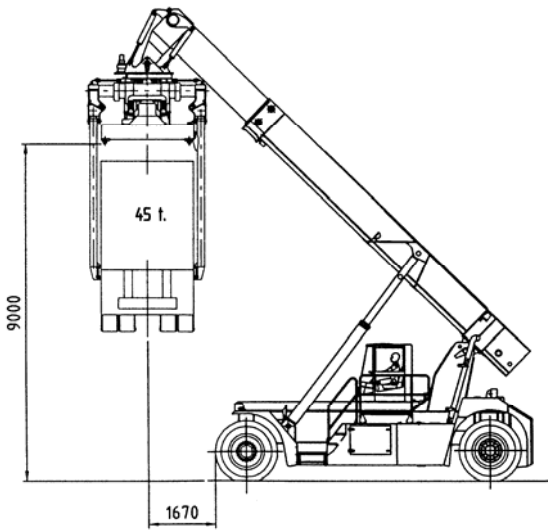
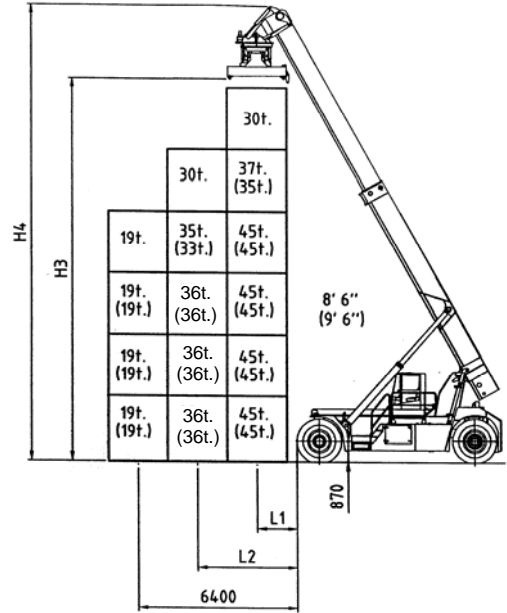
*** Alternatively Iveco-Aifo 8460 SRE10 engine may be installed

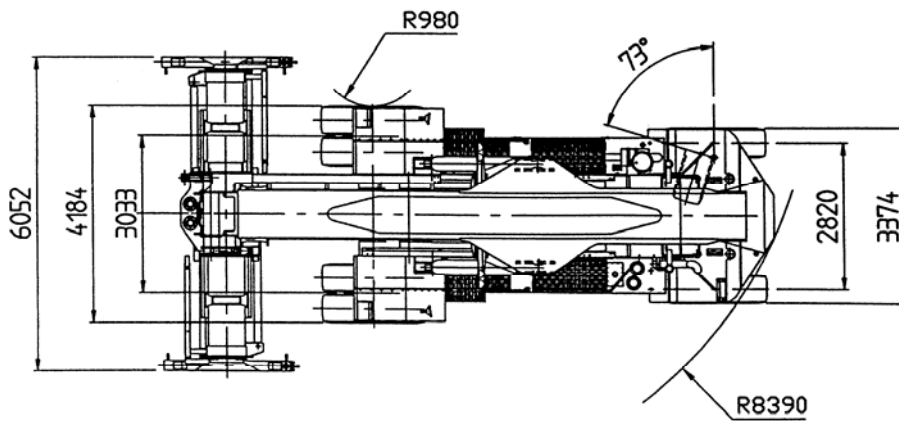
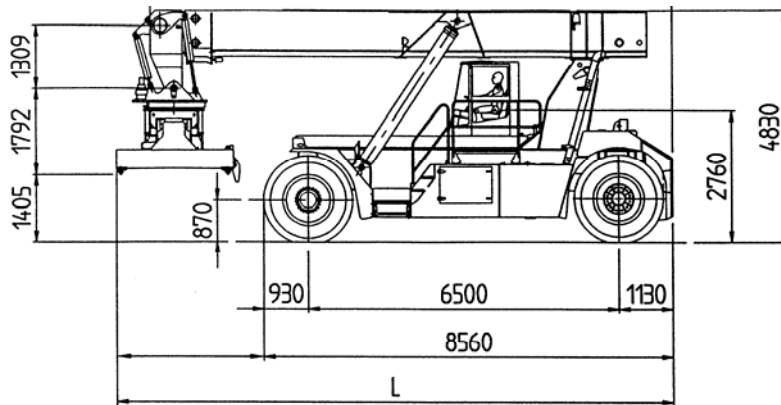
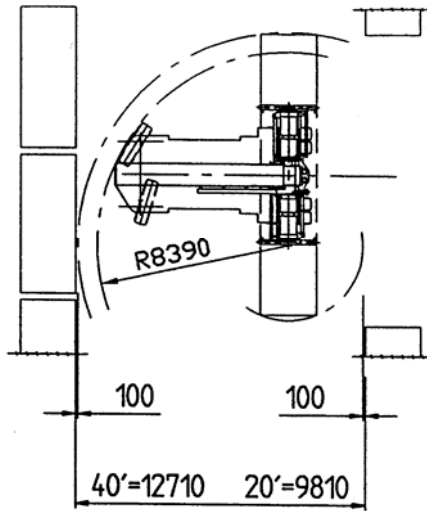
*** Alternatively Cummins M11 C310 engine may be installed

F279.5



F279.6





The illustrations and data contained in this brochure are not binding. The manufacturer reserves the right to make changes for any reason while not altering the primary specifications



C.V.S S.p.A. - Via Emilia - 29010 Roveleto di Cadeo (PC) ITALY
 Tel. ++39.0523.503511 - Fax ++39.0523.500439
 E-mail: info.mktg@cvsferrari.com

Distributed & Serviced by: